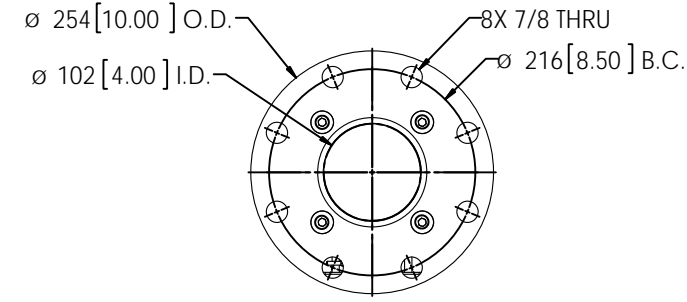
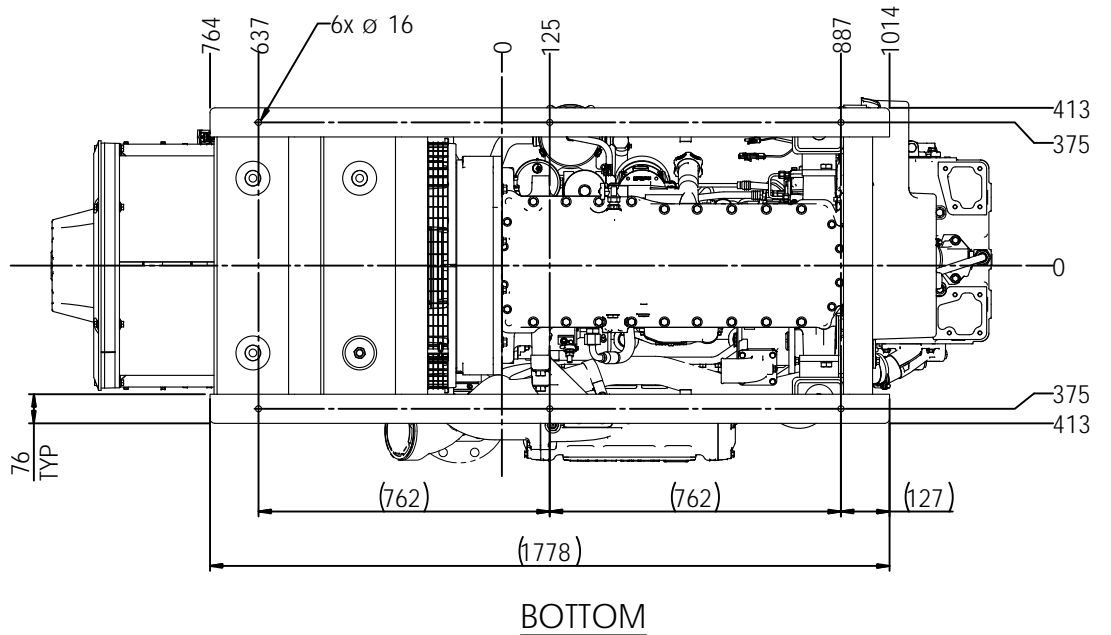
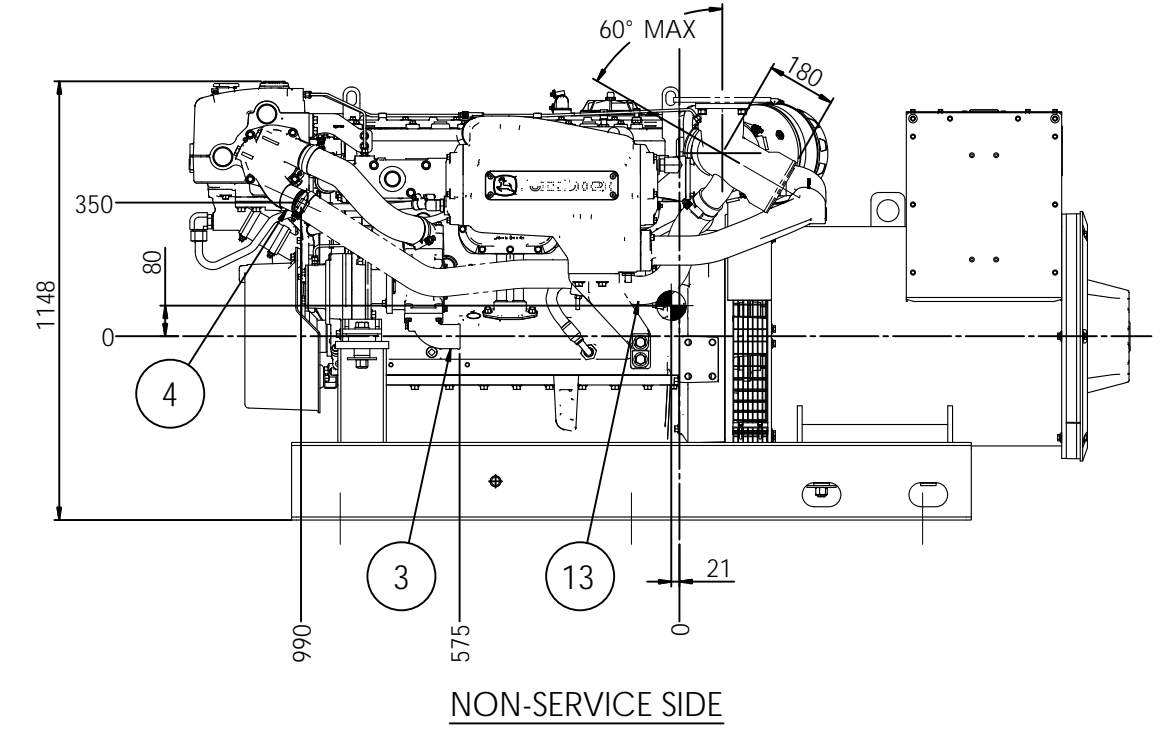
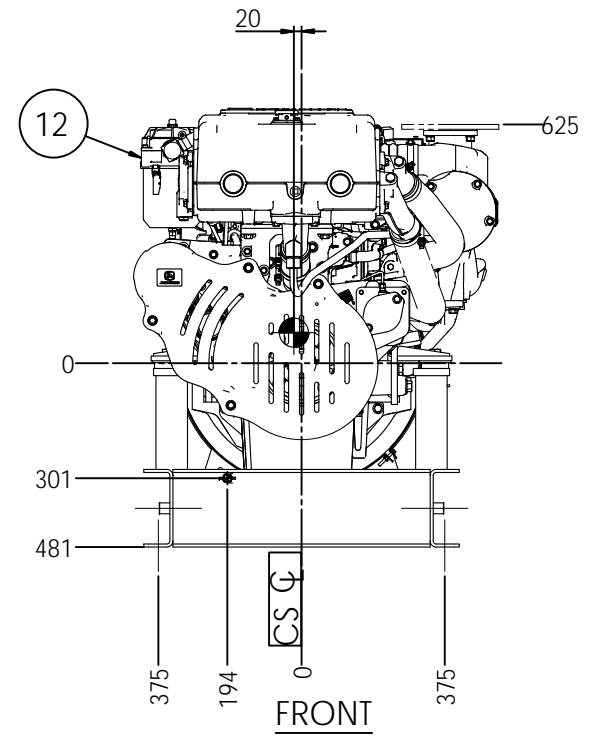
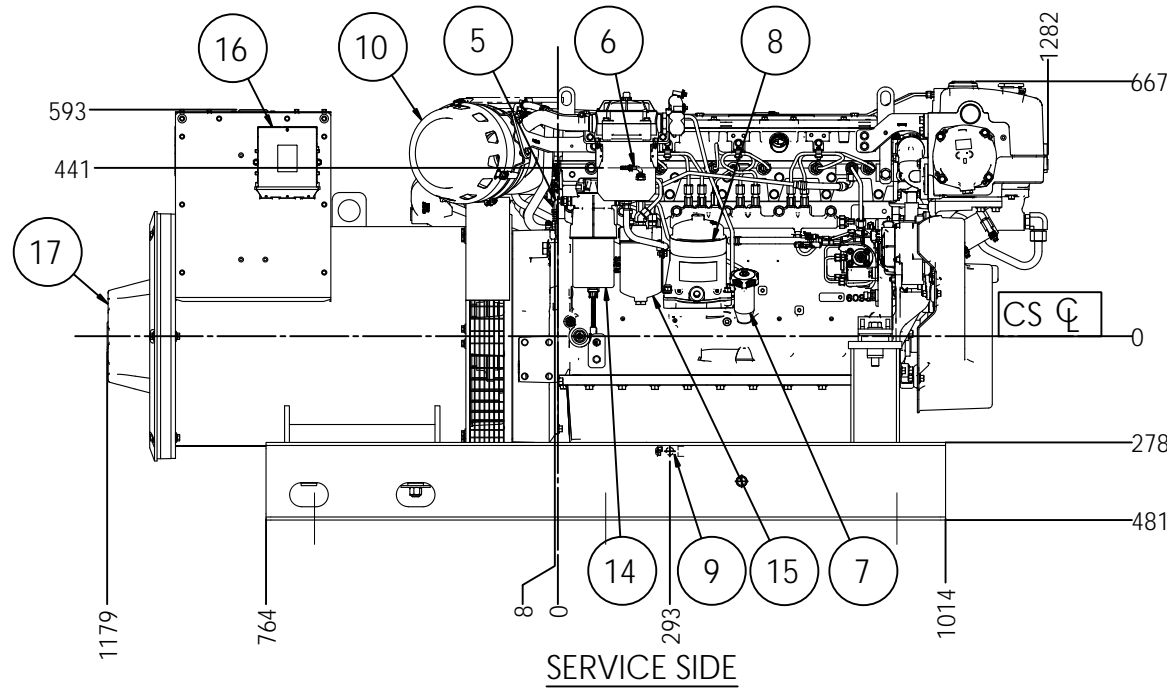


MODEL	DESCRIPTION
M200C13.11	200kW@1800RPM 3PH H.E.
M200C13.51	175kW@1500RPM 3PH H.E.

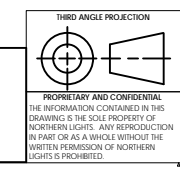


ITEM	DESCRIPTION
1	EXPANSION TANK
2	COOLANT FILL
3	SEAWATER INLET $\varnothing$ 2.5 H.B.
4	SEAWATER OUTLET $\varnothing$ 2.5 H.B. - DRY EXHAUST
5	FUEL SUPPLY $\varnothing$ 3/8 H.B.
6	FUEL RETURN $\varnothing$ 3/8 H.B.
7	CRANKCASE OIL FILLER / DIPSTICK
8	CRANKCASE OIL FILTER
9	ENGINE OIL DRAIN VALVE - $\varnothing$ 7/8-14
10	AIR INLET FILTER
11	OPTIONAL DRY EXHAUST ELBOW - SEE DETAIL
12	CLOSED CRANKCASE VENTILATION SYSTEM
13	ELECTRIC STARTER
14	PRIMARY FUEL FILTER
15	FINAL FUEL FILTER
16	ENGINE CONTROL UNIT
17	PMG
18	OPTIONAL WET EXHAUST ELBOW $\varnothing$ 6.0 H.B.



ESTIMATED DRY WT.: 2041kg [4500 LBS.]

THE DIMENSIONS ON THIS DRAWING ARE SUBJECT TO CHANGE. PLEASE CONTACT NLI TO BE SURE YOU HAVE THE MOST CURRENT REVISION.



UNLESS OTHERWISE SPECIFIED: DIMENSIONS ARE IN MILLIMETERS TOLERANCES: ANGULAR: MACH ± 0.5° BEND ± 1.0° NO DECIMALS = ± 3 ONE DECIMAL = ± 0.5		NAME: MG DATE: 04/28/16	 4420 14th AVE. N.W. Seattle, WA 98107 (206) 789-3880 www.northern-lights.com
INTERPRET GEOMETRIC TOLERANCING PER: ASME Y14.5M		CHECKED: TH 05/13/16	
MATERIAL:		ENG APPR:	
FINISH:		MFG APPR:	
DO NOT SCALE		Q.A. COMMENTS:	TITLE: <b>INSTALLATION DIMENSIONS</b> M200C13 HEAT EXCHANGER COOLED SIZE: <b>D</b> PART NO.: <b>D-4921</b> DWG. NO.: <b>D-4921</b> SCALE: 1:10 WEIGHT: SHEET 1 OF 1